



*The Village at*  
**Bingham Point**

AN ACTIVE, 55+ COMMUNITY

*A Premier 55+ Community*

thoughtfully crafted by Peterson Homes

**Quick move in's available! Ask us about offers and incentives.**

# LANCASTER

2,046 SQ. FT.

## MAIN LEVEL



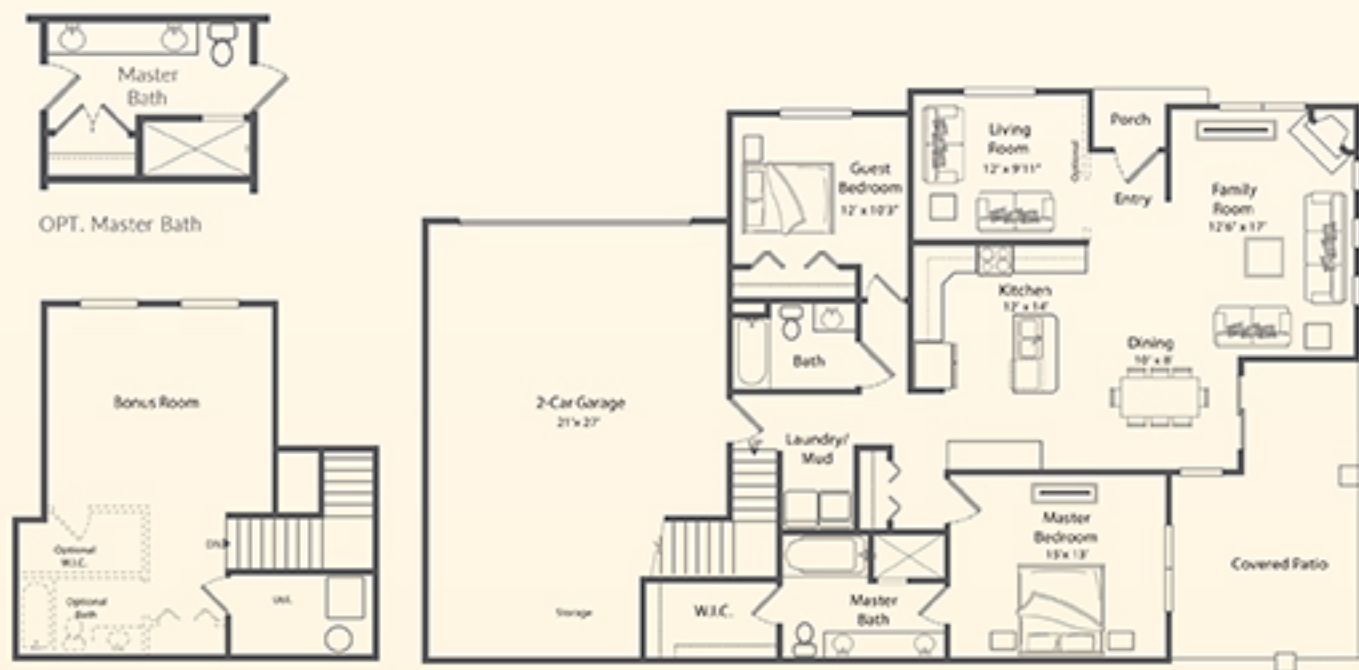
LANCASTER

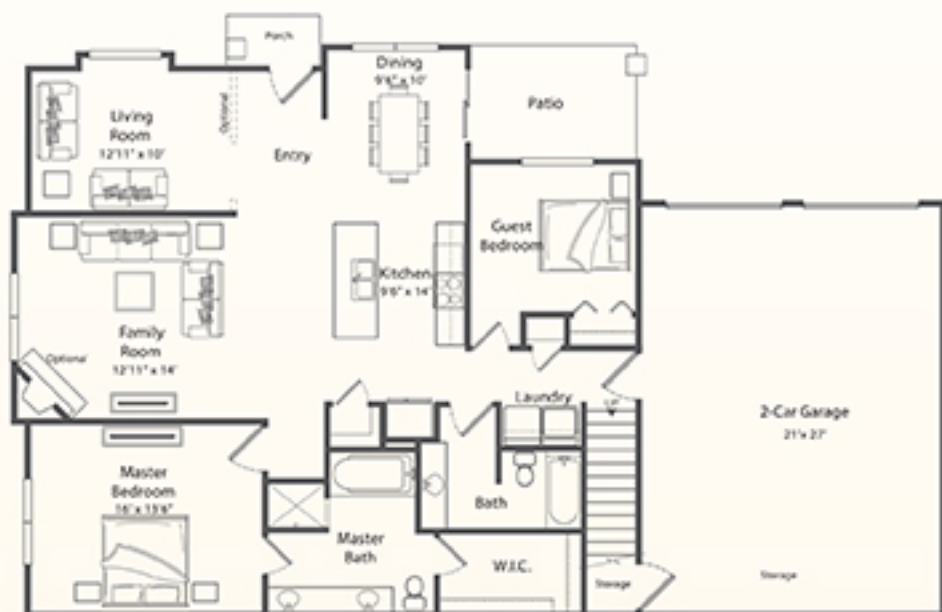
PORTSMOUTH

# PORTSMOUTH

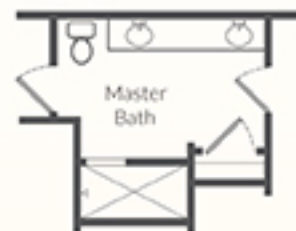
2,066 SQ. FT.

## MAIN LEVEL





MAIN LEVEL



OPT. Master Bath



**DEVONSHIRE**

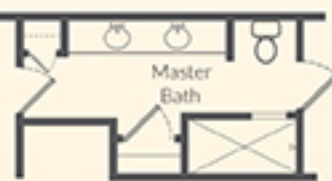
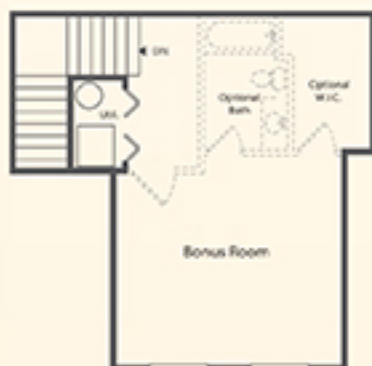
2,138 SQ. FT.



DEVONSHIRE

CANTERBURY

MAIN LEVEL



OPT. Master Bath

**CANTERBURY**

2,020 SQ. FT.

Square Footage approximate. Standard Features and Design subject to change without notice. Buyer to verify all square footage.

# SITE PLAN

Shown subject to change without notice. Dates to sell.



## FEATURES

### DESIGNER EXTERIOR

- Full Stucco, Stone and Hardie Board Exteriors
- Classic Roof Lines with 30 Year Architectural Shingle
- Energy Efficient, Dual Glazed Low-E Vinyl Windows
- Maintenance Free Aluminum Fascia, Soffit & Full Rain Gutter
- Full Landscape
- Individual Outdoor Patio Area

### INTERIOR

- Spacious and Open 2 Bedroom Floor Plans, Option for 3rd Bedroom
- Designed For No Stairs Into Home
- Two Tone Paint
- 7 lb Carpet Pad For Cushion & Comfort
- Low Maintenance Vinyl Flooring
- Doorway and Hall Widths are Generously Designed
- Frigidaire Range, Microwave and Dishwasher in Black or White
- Category 5 Wiring for TV, Computer
- "Easy-Care" Cultured Marble Shower Surround
- Rustic Alder Cabinetry in Stain Grade Finish
- Moen Faucets
- Granite Countertops in Kitchen and Bathrooms
- Ceiling Fans in Master Bedroom and Bonus Room
- Elongated Toilet

### HEATING & COOLING

- 93% Efficient Natural Gas Furnace with Trouble-Free Access To Filters
- 40 Gallon Water Heater
- High Efficiency Insulation Package with 2 x 6 Walls
- 13 Seer Central Air Conditioning

### GARAGE

- Two Car
- Easy Access from Garage to Kitchen
- Extra Garage Depth Available

### CLUBHOUSE

- Kitchen
- Fitness Room
- Spacious Social Area for Gatherings
- Pickleball Court

7176 W Oromia Way  
West Valley City, UT 84128  
801-913-3553  
702-290-9557