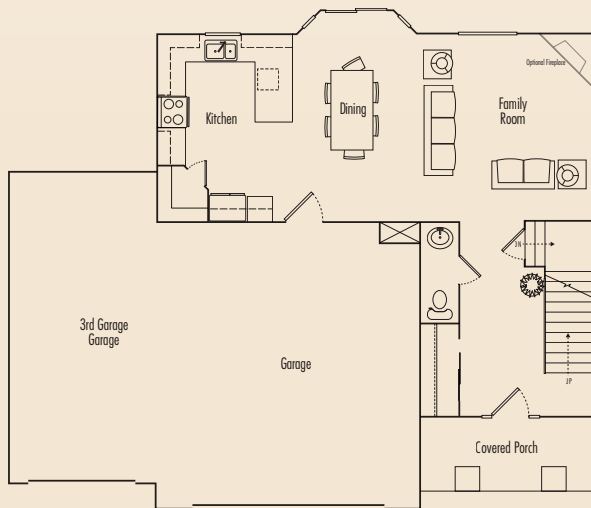


Poplar

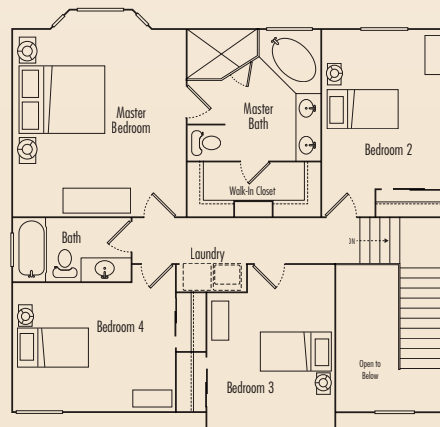
Fin. Sq. Ft. 1884 sf
Starting at 289,900
4 bedrooms 3 baths
Two car garage



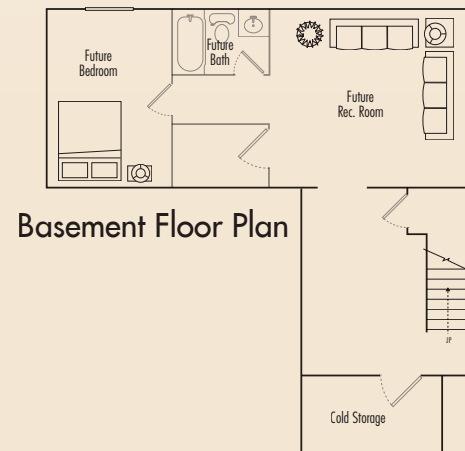
HARVEST
CROSSING



Main Floor Plan



Upper Floor Plan



Basement Floor Plan

Square Footage approximate. Standard Features and Design subject to change without notice.

- Gated Community
- Playground Area
- Convenient Location
- Minutes to both I-15 and Bangerter Highway
- Great Proximity to all Neighborhood Schools and Shopping

- Affordable HOA Fee
- Energy Star Approved
- One Year Builder Home Warranty
- 10 Year Structural Warranty

www.choosepeterson.com